

## Butz Aufzüge GmbH



### Uponor involvement

- ✔ Uponor Magna system on a total of 1,000 square metres | Uponor Thermatop M ceiling system on a total of 400 square metres | Uponor Klett underfloor heating on a total of 400 square metres

## The right system for every building

Top supply technology meets top lift technology

Butz Aufzüge GmbH has expanded its operations in Bergkirchen to include several new buildings. The specialist for high-quality lift systems also had high standards for its own construction project: heating and cooling is provided by various surface temperature control systems from Uponor.

### Project Facts:

Location	Completion	
Bergkirchen, Germany	2021	
Vrsta objekta	Product systems	
Office building	Površinsko grejanje i hlađenje	
Address	Website	Project Type
Bergkirchen, Deutschland	<a href="https://butz-aufzuege.de/">https://butz-aufzuege.de/</a>	New building

## Partners

Builder:

BUTZ AUFZÜGE GmbH

Bergkirchen

Website: [www.butz-aufzuege.de](http://www.butz-aufzuege.de)

hoch3 Gewerbebau

Oberschleißheim

Website: [www.gewerbebau-hoch3.de](http://www.gewerbebau-hoch3.de)

Designer and planning office:

energieplan GmbH

Anzing

Website: <https://energieplan-gmbh.de>

Installation company:

Haberthaler GmbH

Anzing

Website: [www.haberthaler.de](http://www.haberthaler.de)

Interior architect:

Marion Rappl Dipl.-Ing. (FH)

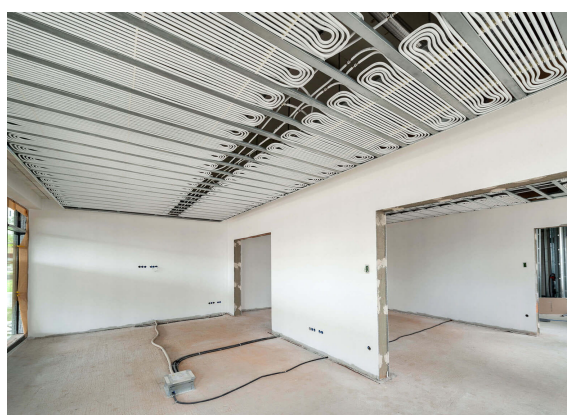
---

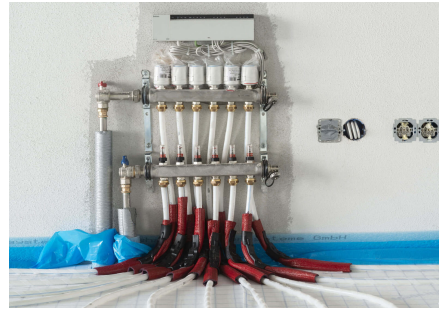
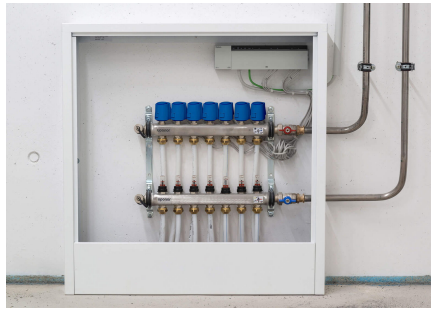
## Top supply technology meets top lift technology

Picturesque landscape and a strong economy: the municipality of Bergkirchen in Upper Bavaria has both to offer. The pretty parish church of St Johann Baptist towers above the village and looks out over the Dachauer Moos. The Amper and Maisach rivers are perfect for hiking and relaxing in nature. With its five industrial estates and proximity to Munich, the municipality is an attractive business location. Butz Aufzüge GmbH has its headquarters here. Founded in 2010, the family business specialises in the planning and implementation of sophisticated lift systems, from passenger lifts and car lifts to bed and goods lifts. The company has grown considerably in recent years and needed more space. A number of new buildings have now been added to the existing buildings: a production and storage hall, an administration building, a single-storey intermediate building, an open garage and a private residence for the entrepreneurial family.

The buildings are heated and cooled with various surface temperature control systems from Uponor.

### Butz-Bergkirchen





**+GF+**

Telefon +381641852299

E-mail

[podrskakupcima.bfs@georgfischer.com](mailto:podrskakupcima.bfs@georgfischer.com)

[W prod.uponor.com](http://prod.uponor.com)